

## Suria Capital Holdings Berhad

(6521 | SURIA MK) Main | Transportation &amp; Logistics

### Below Expectations


#### KEY INVESTMENT HIGHLIGHTS

- **3QFY23 core PATAMI missed our estimate**
- **Port revenue was resilient despite throughput decline, aided by crane hire charges increase**
- **Margin contracted due to increased provision for capital expenditure**
- **Downward revisions of earnings between -5% to -12%**
- **Maintain NEUTRAL with a revised TP of RM1.70**

**Below expectations.** Suria Capital Holdings Berhad (Suria) posted a core PATAMI of RM13.1m in 3QFY23, contributing to a total core PATAMI of RM41.8m in 9MFY23. This fell short of expectations, constituting 65%/67% of our/consensus full-year estimates. The sharper-than-expected decline in port throughput was the factor contributing to the deviation.

**Quarterly.** Despite double-digit declines in container and conventional throughput, revenue from port operations posted a milder year-on-year drop. This was likely due to the +50% increase in crane hire charges for containers, implemented in 3QFY22. Earnings fell by -29.1%yoy as the margin contracted from higher operating expenses linked to increased provision for port capital expenditure and a higher effective tax rate. Sequentially, earnings declined by -4.6%qoq despite slightly higher revenue from improving port throughput, as the increase was offset by similar factors affecting the margin.

**Outlook.** We expect an uptick in the container business, driven by the handling of containerised cargoes from the newly operational plants of South Korea's SK Nexilis and China's Kibing Group since early-4QFY23. Meanwhile, we expect a steady medium-term growth in conventional cargo throughput, fueled by Sabah's palm oil production, which has increased by +7.8%yoy in 10MCY23. Moreover, the stable price of petroleum products is poised to sustain domestic consumption, bolstering the bulk oil throughput. These two types of liquid bulk cargoes together constitute nearly half of the total cargo throughput at Sabah Ports.

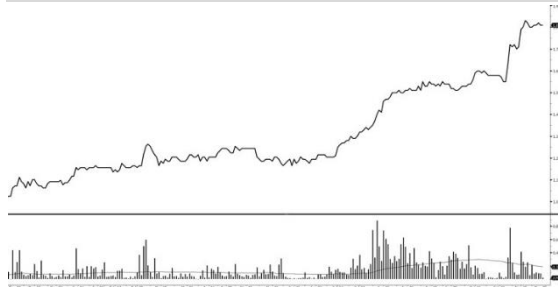
**Maintain NEUTRAL.** Adjusting for lower port throughput and margins to align with the 9MFY23 figures, we revised our earnings estimates for FY23E/FY24F/FY25F by -12%/-5%/-5%. Nevertheless, our DCF-derived TP stands higher at **RM1.70** (from 1.45) with a lowered WACC assumption of 8% (from 9%). This adjustment is based on a lower equity risk premium, considering the expectation of a more stable container throughput resulting from the recent foreign direct investments. The stock is currently trading at +1.5SD from its 5-year historical mean. A key upside risk is the potential revision of port tariffs, which received initial approval in CY20 and is pending implementation. 

**Maintain NEUTRAL**
**Revised Target Price: RM1.70**  
 (Previously RM1.45)

#### RETURN STATISTICS

Price @ 30 <sup>th</sup> November 2023 (RM)	1.79
Expected share price return (%)	-5.0
Expected dividend yield (%)	+2.7
Expected total return (%)	-2.3

#### SHARE PRICE CHART



Price performance (%)	Absolute	Relative
1 month	13.3	11.9
3 months	17.8	19.4
12 months	68.9	73.4

#### INVESTMENT STATISTICS

FYE Dec	2023E	2024F	2025F
Operating revenue	239.6	262.4	270.3
EBIT	82.4	93.4	95.5
PBT	73.7	82.1	83.2
Core PATAMI	56.0	62.4	63.3
EPS (sen)	16.2	18.0	18.3
DPS (sen)	4.9	5.4	5.5
Dividend yield (%)	2.7%	3.0%	3.1%

#### KEY STATISTICS

FBM KLCI	1,452.74
Issue shares (m)	345.8
Estimated free float (%)	41.67
Market Capitalisation (RM'm)	619.0
52-wk price range	RM1.06 - RM1.84
3-mth average daily volume (m)	0.20
3-mth average daily value (RM'm)	0.31
Top Shareholders (%)	
Warisan Harta Sdn Bhd	45.4
Yayasan Sabah	3.7
icapital.biz	3.4

**SURIA CAPITAL: 3Q23 RESULTS SUMMARY**

FYE Dec (RM'm)	Quarterly					Cumulatively		
	3QFY23	2QFY23	3QFY22	QoQ	YoY	9MFY23	9MFY22	YoY
<b>Income Statement</b>								
Operating revenue	62.0	61.2	63.5	1.4%	-2.3%	182.5	175.4	4.1%
EBIT	21.1	18.6	25.0	13.2%	-15.7%	55.8	55.1	1.3%
Finance cost	-2.1	-2.1	-1.8	-1.0%	-15.8%	-6.2	-5.5	-13.2%
PBT	19.0	16.5	23.2	14.7%	-18.2%	49.6	49.6	0.0%
Tax expense	-5.0	-4.1	-4.4	-22.2%	-14.5%	-12.6	-10.0	-26.1%
PATAMI	13.9	12.4	18.8	12.2%	-25.8%	37.0	39.9	-7.3%
Core PATAMI	13.1	13.7	18.4	-4.6%	-29.1%	41.8	39.1	7.0%
EBIT margin (%)	34.0%	30.5%	39.4%			30.6%	31.4%	
PBT margin (%)	30.6%	27.0%	36.5%			27.2%	28.3%	
Core PATAMI margin (%)	21.1%	22.4%	29.0%			22.9%	22.3%	
Effective tax rate (%)	-26.6%	-25.0%	-19.0%			-25.4%	-20.2%	

**SEGMENTAL BREAKDOWN & OPERATIONAL STATISTICS**

FYE Dec (RM'm)	Quarterly					Cumulatively		
	3QFY23	2QFY23	3QFY22	QoQ	YoY	9MFY23	9MFY22	YoY
<b>Revenue</b>								
Port operations	60.3	59.6	62.1	1.2%	-2.8%	177.8	170.5	4.3%
Property development	0.4	0.3	0.003	40.4%	-	0.9	0.003	-
Logistics and bunkering services	0.4	0.5	0.4	-13.1%	-9.1%	1.2	1.1	16.7%
Contract and engineering and ferry terminal operations	1.4	1.1	1.1	26.5%	29.0%	3.8	4.4	-14.8%
<b>Operating Profit</b>								
Port operations	15.0	17.6	22.3	-14.9%	-32.8%	47.5	42.9	10.7%
Property development	5.5	0.2	2.4	>100%	126.8%	5.7	7.0	-19.3%
Logistics and bunkering services	0.2	0.3	0.2	-30.6%	-22.7%	0.6	0.5	28.0%
Contract and engineering and ferry terminal operations	0.3	-0.004	-0.4	>100%	177.5%	0.1	0.2	-69.7%
<b>Operational Statistics</b>								
Container volume (TEU)	111,546	107,605	125,415	3.7%	-11.1%	318,131	337,900	-5.9%
Conventional volume (m MT)	5.4	5.2	6.2	3.8%	-12.9%	16.0	17.5	-8.6%

Source: Suria Capital, MIDFR

**FINANCIAL SUMMARY**

<b>Income Statement (RM'm)</b>	<b>2021A</b>	<b>2022A</b>	<b>2023E</b>	<b>2024F</b>	<b>2025F</b>
Operating revenue	205.3	237.2	239.6	262.4	270.3
EBIT	66.3	76.0	82.4	93.4	95.5
PBT	58.6	67.0	73.7	82.1	83.2
PATAMI	39.5	59.1	56.0	62.4	63.3
Core PATAMI	50.2	48.6	56.0	62.4	63.3
EPS (sen)	11.4	17.1	16.2	18.0	18.3
PER (x)	15.7x	10.5x	11.1x	9.9x	9.8x
DPS (sen)	3.8	4.0	4.9	5.4	5.5
Dividend yield (%)	2.1%	2.2%	2.7%	3.0%	3.1%

Note: Operating revenue excludes revenue from construction services for concession infrastructure.

<b>Balance Sheet (RM'm)</b>	<b>2021A</b>	<b>2022A</b>	<b>2023E</b>	<b>2024F</b>	<b>2025F</b>
Concession assets	802.2	783.4	891.8	994.1	1,091.7
PPE	56.7	99.5	97.7	96.0	94.8
<b>Non-current assets</b>	<b>1,085.3</b>	<b>1,178.4</b>	<b>1,284.8</b>	<b>1,385.5</b>	<b>1,481.9</b>
Trade debtors	122.0	29.0	26.4	28.8	29.7
Cash	79.9	114.4	85.9	96.6	114.7
<b>Current assets</b>	<b>313.8</b>	<b>300.8</b>	<b>304.2</b>	<b>329.9</b>	<b>358.8</b>
Long-term debt	10.4	59.3	139.3	219.3	299.3
<b>Non-current liabilities</b>	<b>201.3</b>	<b>224.5</b>	<b>304.5</b>	<b>384.5</b>	<b>464.5</b>
Trade creditors	37.1	40.5	31.3	33.9	34.9
Short-term debt	0.1	6.6	6.6	6.6	6.6
<b>Current liabilities</b>	<b>65.8</b>	<b>76.6</b>	<b>67.4</b>	<b>70.0</b>	<b>71.0</b>
Share capital	358.8	358.8	358.8	358.8	358.8
Retained earnings	773.6	819.6	858.8	902.5	946.7
<b>Equity</b>	<b>1,132.1</b>	<b>1,178.0</b>	<b>1,217.2</b>	<b>1,260.9</b>	<b>1,305.2</b>

<b>Cash Flow (RM'm)</b>	<b>2021A</b>	<b>2022A</b>	<b>2023E</b>	<b>2024F</b>	<b>2025F</b>
PBT	58.2	67.0	73.7	82.1	83.2
Depreciation & amortisation	48.6	59.0	54.9	60.9	65.6
Changes in working capital	-8.5	-21.6	-15.4	-12.3	-9.9
<b>Operating cash flow</b>	<b>74.5</b>	<b>83.3</b>	<b>95.5</b>	<b>111.0</b>	<b>119.0</b>
Capital expenditure	-35.2	-57.3	-161.4	-161.5	-162.0
<b>Investing cash flow</b>	<b>-45.7</b>	<b>-111.7</b>	<b>-161.4</b>	<b>-161.5</b>	<b>-162.0</b>
Debt raised/(repaid)	-7.7	55.5	80.0	80.0	80.0
Dividends paid	-13.1	-8.3	-16.8	-18.7	-19.0
<b>Financing cash flow</b>	<b>-35.0</b>	<b>57.1</b>	<b>63.2</b>	<b>61.3</b>	<b>61.0</b>
<b>Net cash flow</b>	<b>-6.2</b>	<b>28.7</b>	<b>-2.7</b>	<b>10.7</b>	<b>18.1</b>
<b>Beginning cash flow</b>	<b>65.7</b>	<b>59.9</b>	<b>88.6</b>	<b>85.9</b>	<b>96.6</b>
<b>Ending cash flow</b>	<b>59.5</b>	<b>88.6</b>	<b>85.9</b>	<b>96.6</b>	<b>114.7</b>

<b>Profitability Margins</b>	<b>2021A</b>	<b>2022A</b>	<b>2023E</b>	<b>2024F</b>	<b>2025F</b>
EBIT margin	30.7%	28.1%	33.4%	34.7%	34.4%
PBT margin	27.1%	24.7%	29.9%	30.5%	30.0%
PATAMI margin	18.3%	21.8%	22.7%	23.2%	22.8%
Core PATAMI margin	23.2%	18.0%	22.7%	23.2%	22.8%

Source: Suria Capital, MIDFR

MIDF RESEARCH is part of MIDF Amanah Investment Bank Berhad (197501002077 (23878 – X)).  
(Bank Pelaburan)  
(A Participating Organisation of Bursa Malaysia Securities Berhad)

## DISCLOSURES AND DISCLAIMER

This report has been prepared by MIDF AMANAH INVESTMENT BANK BERHAD (197501002077 (23878 – X)) for distribution to and use by its clients to the extent permitted by applicable law or regulation.

Readers should be fully aware that this report is for information purposes only. The opinions contained in this report are based on information obtained or derived from sources that MIDF Investment believes are reliable at the time of publication. All information, opinions and estimates contained in this report are subject to change at any time without notice. Any update to this report will be solely at the discretion of MIDF Investment.

MIDF Investment makes no representation or warranty, expressed or implied, as to the accuracy, completeness or reliability of the information contained therein and it should not be relied upon as such. MIDF Investment and its affiliates and related BNM and each of their respective directors, officers, employees, connected parties, associates and agents (collectively, "Representatives") shall not be liable for any direct, indirect or consequential loss, loss of profits and/or damages arising from the use or reliance by anyone upon this report and/or further communications given in relation to this report.

This report is not, and should not at any time be construed as, an offer, invitation or solicitation to buy or sell any securities, investments or financial instruments. The price or value of such securities, investments or financial instruments may rise or fall. Further, the analyses contained herein are based on numerous assumptions. This report does not take into account the specific investment objectives, the financial situation, risk profile and the particular needs of any person who may receive or read this report. You should therefore independently evaluate the information contained in this report and seek financial, legal and other advice regarding the appropriateness of any transaction in securities, investments or financial instruments mentioned or the strategies discussed or recommended in this report.

The Representatives may have interest in any of the securities, investments or financial instruments and may provide services or products to any company and affiliates of such BNM mentioned herein and may benefit from the information herein.

This document may not be reproduced, copied, distributed or republished in whole or in part in any form or for any purpose without MIDF Investment's prior written consent. This report is not directed or intended for distribution to or use by any person or entity where such distribution or use would be contrary to any applicable law or regulation in any jurisdiction concerning the person or entity.

### MIDF AMANAH INVESTMENT BANK: GUIDE TO RECOMMENDATIONS

#### STOCK RECOMMENDATIONS

BUY	Total return is expected to be >10% over the next 12 months.
TRADING BUY	Stock price is expected to <i>rise</i> by >10% within 3-months after a Trading Buy rating has been assigned due to positive newsflow.
NEUTRAL	Total return is expected to be between -10% and +10% over the next 12 months.
SELL	Total return is expected to be <-10% over the next 12 months.
TRADING SELL	Stock price is expected to <i>fall</i> by >10% within 3-months after a Trading Sell rating has been assigned due to negative newsflow.

#### SECTOR RECOMMENDATIONS

POSITIVE	The sector is expected to outperform the overall market over the next 12 months.
NEUTRAL	The sector is to perform in line with the overall market over the next 12 months.
NEGATIVE	The sector is expected to underperform the overall market over the next 12 months.

#### ESG RECOMMENDATIONS\* - source Bursa Malaysia and FTSE Russell

☆☆☆	Top 25% by ESG Ratings amongst PLCs in FBM EMAS that have been assessed by FTSE Russell
☆☆	Top 26-50% by ESG Ratings amongst PLCs in FBM EMAS that have been assessed by FTSE Russell
☆	Top 51%- 75% by ESG Ratings amongst PLCs in FBM EMAS that have been assessed by FTSE Russell
	Bottom 25% by ESG Ratings amongst PLCs in FBM EMAS that have been assessed by FTSE Russell

\* ESG Ratings of PLCs in FBM EMAS that have been assessed by FTSE Russell in accordance with FTSE Russell ESG Ratings Methodology